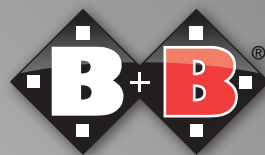
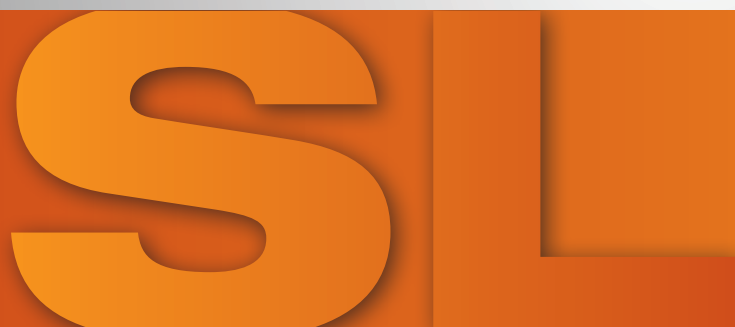


Enjoy mobility.



SEE
TALK
SPEE



SPECIAL SIZES

Seamless coverage up to a height of 2.10 m and a weight of 250 kg.

The number of tall and heavy people is growing steadily. We can't really speak of a standard size when it comes to people. B+B takes this into account with the Special Sizes product range. Sub-divided into XL, XXL and SL (Special Length), these products seamlessly match the the standard size. B+B is in contact with research and science in order to guarantee the best possible coverage. To this end, B+B joined forces with Leipzig University's Research Centre for Civilisation Diseases (LIFE). The seamless coverage up to a height of 2.10 m and a weight of 250 kg is therefore easily possible– with the usual B + B quality.

Product Categories



XL
PRODUCTS
capacity of
up to 170 KG



*S-Eco 300 XL**Pyro Light XL**Pyro Light Optima XL*



XXL
PRODUCTS
capacity of
up to 250 KG



*Econ XXL**Commode Wheelchair XXL**Rollator B XXL**Neo XXL*

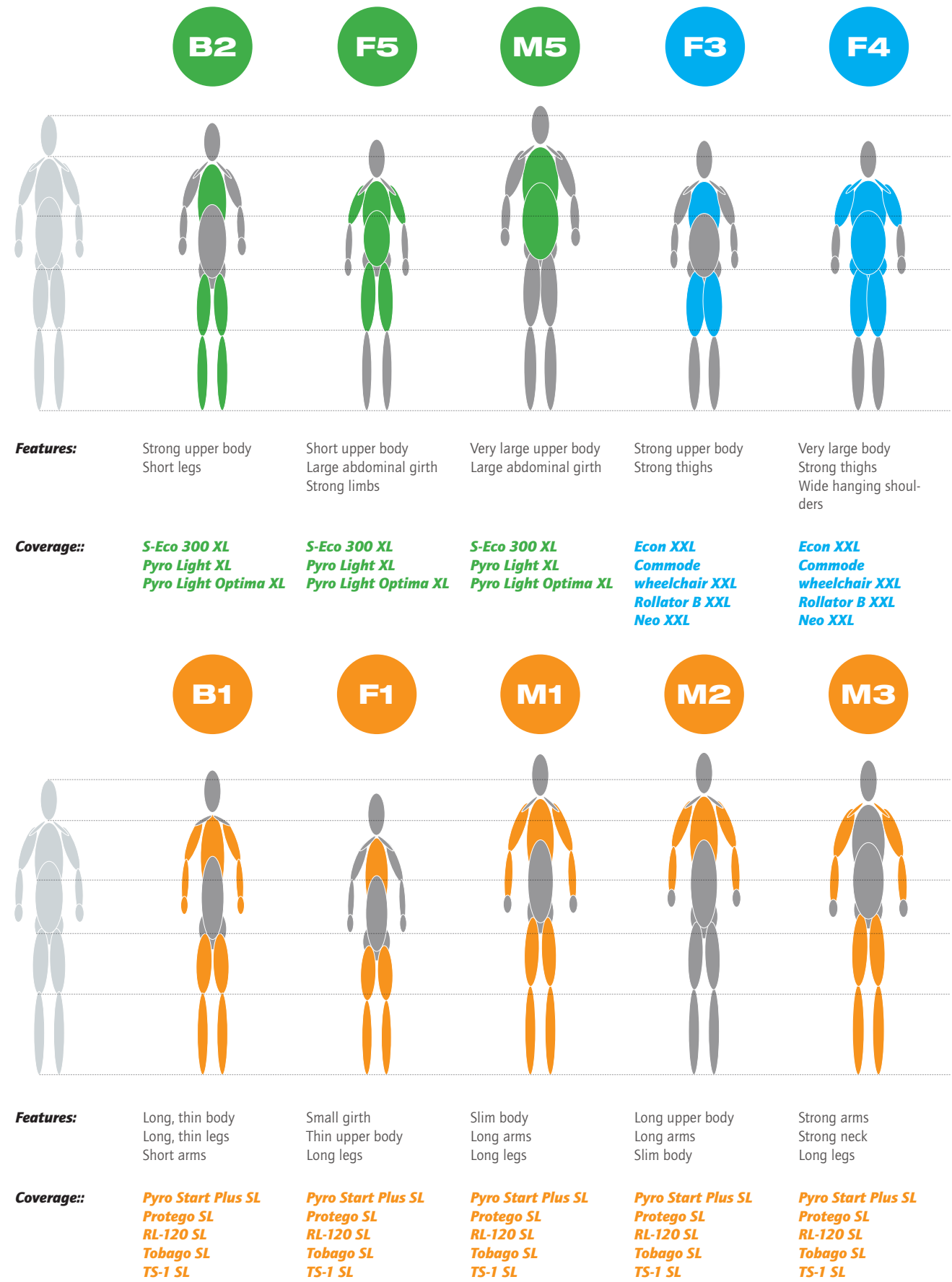


SL
PRODUCTS
coverage height of
up to 2,10 m



*Pyro Start Plus SL**Protego SL**RL-120 SL**Tobago SL**TS-1 SL*

Body Shapes & Coverage



Source: Löffler-Wirth H et al. (2016) Novel Anthropometry Based on 3D-Bodyscans Applied to a Large Population Based Cohort.

B2

F5

M5



The standard wheelchair with added flexibility

The S-ECO 300 XL is the B+B XL wheelchair in the standard range. With its ability to accommodate a weight of 170 kg and its availability in seat widths of 52 cm, 55 cm and 58 cm, this wheelchair is ideal for the

larger user. As with the S-ECO 300, the seat height can be adjusted and a rear wheel extension is also possible. Furthermore, the S-ECO 300 XL is equipped with duo side panels.

Standard fittings



Half-shafts



Duo side parts
adjustable desk and long



Adapter block
double mounting for seat height adjustment and wheel base extension



Legrest
swivelling in and outwards

Optional



Anti tippers



Stick holder



Safety belt



Footplate

Technical Data

Seating unit:		
Seat width	52 55 58 cm	●
Seat height front	51 cm rear 49 cm (standard)	●
Seat height front	47 cm 49 cm	○
Seat height rear	44 cm 46 cm	○
Seat depth	45 cm	●
Seat cushion		○
Seat upholstery	nylon	●
Backrest height	40 cm	●
Backrest upholstery	nylon	●
Headrest adjustable incl. fixation (possible for seat widths until 56)		○
Leg rests & Side parts:		
Footplates with heel straps		●
Footplate		○
Legrest swivelling in and outwards		●
Legrest elevating horizontally adjustable		○
Amputee support left right		○
Duo side parts (desk long position adjustable) swing away		●
Side parts adjustable in height		○
Tyres:		
Rear wheel	24" x 13/8" PU, incl. half-shaft	●
Rear wheel	12,5" PU, (transit version)	○
Front wheel	200 x 50 cm	●
PU-tires (solid rubber)		●
Pneumatic tires		○
Wheelbase extension		●
Adapter block		●
One hand drive		○
Spoke protection, transparent		○
Hand rim cover		○

● Basic equipment without extra charge ● selectable, without extra charge ○ extra charge

Brakes:	
Parking brake (user operation)	●
Drum brake (attendant operation)	○
Single-hand brake (mechanical)	○
Brake lever extension	○
Equipment:	
Togo (power pushing aid)	○
Adaption for mounting the wheelchair	○
Mounting aid for adaption	○
Anti tippers	○
Tilting aid	●
Push handles adjustable in height	○
Safety belt XL	○
Stick holder	○
Therapy tray (possible for seat widths until 56)	○
Fixation for infusion bottles oxygen bottles	○
Apino City Bag	○
Apino Backpack	○
Passive lighting	●
Frame colour: Grey	●

22,8 kg

sw + 20 cm

109 cm

87 – 91 cm

170 kg

B2

F5

M5



Comfort guaranteed

Like the Pyro Light Optima, the Pyro Light Optima XL comes with standard features such as an individual seat depth and seat height adjustment, angle and width adjustable footrests, as well as height-adjustable side panels. With a maximum user weight of 170 kg and availability in

the seat widths of 52 cm, 55 cm and 58 cm, it provides optimum stability and comfort. The Pyro Light Optima XL also benefits from height-adjustable push handles, making it more comfortable for the accompanying person to manoeuvre

Standard equipment



Adapter block
for manifold adjustments



Seat depth
adjustable to 50 cm



Side parts
adjustable in height



Push handles
adjustable in height

Optional



Headrest
adjustable



Legrests elongation



Therapy tray



Drum brake

Technical Data

Seating unit:		
Seat width	52 55 58 cm	●
Seat height front	50 cm	●
Seat height front 40 cm (only available with 6" front wheel)		○
Seat height front	42,5 45 47,5 cm	○
Seat dept	42,5 cm (adjustable from 40 cm to 50 cm in 2.5 cm steps)	●
Seat cushion (seat widths 37 – 52 cm)		○
Seat upholstery	Nylon	●
Backrest height	42 cm	●
Backrest height adjustable	40 – 46 cm	●
Backrest	with lumbar curve	●
Adjustable backrest unit	with strap system	●
Backrest upholstery	Nylon	●
Headrest adjustable incl. fixation (possible for seat widths until 56)		○
Leg rests & Side parts:		
Footplates adjustable in angle and in width with heel straps		●
Legrest swivelling in and outwards		●
Legrest elevating horizontally	adjustable	○
Legrest elongation	10 cm (from seat height 47 cm)	○
Amputee support	right left	○
Side parts adjustable in height		●
Tyres:		
Rear wheel	24" x 13/8" PU solid rubber, incl. half-shaft	●
Rear wheel	12,5" PU solid rubber	○
Front wheel	8" x 11/4" PU solid rubber	○
Wheelbase extension		○
One hand drive		○
Spoke protection	transparent	○
Hand rim cover		○

● Basic equipment without extra charge ● selectable, without extra charge ○ extra charge

Brakes:	
Parking brake (user operation)	●
Drum brake (attendant operation)	○
Single-hand brake (mechanical)	○
Brake lever extension	○
Equipment:	
Togo (power pushing aid)	○
Adaption for mounting the wheelchair	○
Mounting aid for adaption	○
Anti tippers	○
Tilting aid	●
Push handles adjustable in height	●
Safety belt XL	○
Stick holder	○
Therapy tray (possible for seat widths until 56)	○
Fixation for infusion bottles oxygen bottles	○
Apino City Bag	○
Apino Backpack	○
Passive lighting	●
Frame colour: Silver metallic	●

21,6 kg	sw + 20 cm	111 cm	85 – 95 cm	170 kg

B2

F5

M5



Provides versatility

The Pyro Light XL is the reliable alternative to the Pyro Light for the larger user. It provides a wide range of adaptations, such as the adjustable backrest, the adjustable seat height and the rear wheel extension. The Pyro Light XL can also be equipped with an optional “desk” or “long”

side panel. In addition, the leg rests can swivel in and out and can be adjusted to a horizontal position if necessary. The angle of the footrests can also be adjusted. Its extensive range of accessories makes the Pyro Light XL even more versatile.

Standard equipment



Half-shaft



Combi side parts
adjustable desk | long and height



Footplates
with heel strap



Combi side parts
easy removable

Optional



Single-hand hydraulic brake



Seat cushion



Brake lever extension



One hand drive

Technical Data

Seating unit:		
Seat width 51 56 cm		●
Seat height 49 cm		●
Seat height adjustment 42 44 45 47 52 54 cm		○
Seat depth 42 (Standard) 44 cm		●
Seat cushion (seat widths 38 – 52 cm)		○
Seat upholstery Nylon		●
Backrest height 42 cm		●
Backrest height adjustment 40 – 44 cm		●
Backrest with lumbar curve		●
Adjustable backrest unit with strap system (Seat width 51 56 cm)		○
Backrest upholstery Nylon		●
Headrest adjustable incl. fixation (possible for seat widths until 56)		○
Leg rests & Side parts:		
Footplates with heel strap		●
Footplates adjustable in angle and lockable		●
Footplate		○
Legrest swivelling in and outwards		●
Legrest elevating horizontally adjustable		○
Legrest elongation 10 cm (from seat height 47 cm)		○
Amputee support right left		○
Combi side parts (desk long position and adjustable in height)		●
Side parts adjustable in height		○
Tyres:		
Rear wheel 24" x 13/8", incl. half-shaft		●
Rear wheel 12,5" PU, (transit version)		○
Front wheel 7" x 13/4"		●
PU-tires (solid rubber)		●
Pneumatic tires		○
Wheelbase extension		●
One hand drive		○
Spoke protection, transparent		○
Hand rim cover		○

● Basic equipment without extra charge ● selectable, without extra charge ○ extra charge

Brakes:	
Parking brake (user operation)	●
Drum brake (attendant operation)	○
Single-hand brake (mechanical)	○
Brake lever extension	○
Equipment:	
Togo (power pushing aid)	○
Adaption for mounting the wheelchair	○
Mounting aid for adaption	○
Anti tippers	○
Tilting aid	●
Push handles adjustable in height	○
Safety belt XL	○
Stick holder	○
Therapy tray	○
Castor extension (hemiplegic version)	○
Fixation for infusion bottles oxygen bottles	○
Apino City Bag	○
Apino Backpack	○
Passive lighting	●
Frame colour: Silver metallic	○

18,6 kg	sw + 19 cm	108 cm	94 cm	170 kg

F3

F4



The standard wheelchair with added strength

The wheelchair Econ XXL is a stable companion with a capacity up to 250 kg. The different seat widths 60, 65 and 70 cm offer a generous seating comfort. As standard, the wheelchair already offers a high level of comfort

for the patient as well as for the accompanying person: Chair cushion, footrest and cane holder are also included as standard features as well as drum brakes, height-adjustable handles and a bag on the back.

Standard equipment



Drum brake



Stabilizing bar



Footplate
adjustable in height



Stick holder

Optional



Amputee support



Side parts
6 times adjustable in height



Legrest
elevating horizontally



Backrest unit with strap system
elevating horizontally

Technical Data

Seating unit:	
Seat width 60 65 70 cm	●
Seat height 50 - 55 cm	●
Seat depth 48 cm	●
Seat cushion	●
Adjustment of backrest height	●
Adjustable backrest unit with strap system	○
Leg rests & Side parts:	
Footplate adjustable in height	●
Heel straps with velcro closure	●
Calf belt	●
Legrest swivelling in and outwards removable	●
Legrest elevating horizontally adjustable	○
Amputee support right left	○
Side parts foldable upwards	●
Side parts adjustable in height	○
Tyres:	
Rear wheel 24", reinforced axle	●
Front wheel 7"	●
PU-tires (solid rubber)	●

Brakes:	
Parking brake (user operation)	●
Drum brake (attendant operation)	●
Equipment:	
Anti tippers	○
Tilting aid	●
Push handles adjustable in height	●
Stick holder	●
Stabilizing bar	●
Pocket in back rest upholstery	●
Passive lighting	●
Frame colour: Anthracite metallic	●

35,2 kg	sw + 22 cm	110 cm	99 – 106 cm	250 kg

● Basic equipment without extra charge ● selectable, without extra charge ○ extra charge

F3

F4



Optimum power

The Neo XXL is the most sturdy and powerful of the B+B power chair range. The powerful motor masters easily distances up to 40 km. Beneath its high max. capacity Neo offers a lot of driving comfort, as well

as comfortable seating, due to the single wheel suspension of front and rear wheels. Further it offers 3 different seat options and the possibility to upgrade all manual adjustments into electrical adjustments.

Standard equipment



Comfort Seat



LED lighting
front and rear reflector



Footplates
adjustable in angle



Wheel suspension
single wheel suspension
(front and rear wheel)

Optional



Rearview mirror



Control unit
R-Net Can Bus



Mudguard
rear wheels



Adjustments
electrically upgradeable

Technical Data

Seating unit:	
Seat width adjustable 40 - 51 cm	●
Seat width adjustable 52 - 60 cm	○
Seat height 50 cm	●
Seat depth adjustable 42 - 51 cm	●
Seat cushion	●
Standard seat, black	○
Comfort seat (only in combination with elongated seat frame)	●
Recaro seat	○
Extended seating frame	●
Adjustable backrest with velcro strap system	○
Backrest height 44 cm	●
Backrest angle adjustment, -5° to 75°, manually	●
Backrest angle adjustment, -5° to 75°, electrically (needs R-Net control)	○
Seat angle adjustable -2° to +19°, manually	●
Seat angle adjustable -2° to +19°, electrically (needs R-Net control)	○
Headrest	○
Leg rests & Side parts:	
Footplates adjustable in angle	●
Legrests to swing in and out	●
Legrests horizontally with length adjustment (only with calf pads)	○
Legrests adjustable in width and horizontally, electrically	○
Calf pads for horizontally elevating legrests	○
Side parts adjustable in height and width	●
Drive & control:	
Motor 2x24V/220W	●
Batteries 2x12V/60 Ah	●
Control unit PG Drive VR-2 60 Ah	●
Control unit R-Net Can Bus (mandatory for electrical adjustments)	○
Battery charger 24V/8 Ah	●
Speed 6 km/h	●
Speed 10 km/h incl. light package according to STVZO	○

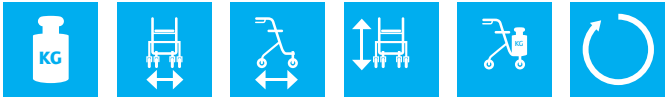
Max. range approx. 40 km	●
Obstacle height 50 mm	●
Climbing ability 12° 21,2%	●
Tyres:	
Front wheels 8" (3.00 - 4 mm), air	●
Rear wheels 14" (3.00 - 8 mm), air	●
Front wheels 8" (3.00 - 4 mm), lug tread	○
Rear wheels 14" (3.00 - 8 mm), lug tread	○
Airless tyres (RolkoFill)	○
Front and rear single wheel suspension	●
Anti tippers	●
Mudguard rear wheels	○
Equipment:	
Front- and rear lights, flashing lights	●
Control unit to swing away, adjustable in length	●
Control unit mounted left or right side	○
VR-2 control unit (for attendant person)	○
R-Net control unit (for attendant person)	○
Fixation for an additional control unit (for attendant person)	○
Safety belt	○
Stick holder	○
Rearview mirror	○
Tool kit	●
Software package: software, cable (E)	○
Frame colour: Silver	●

131 kg	69 cm	115 cm	101 cm	200 kg	110 cm

● Basic equipment without extra charge ○ selectable, without extra charge ○ extra charge

ROLLATOR B XXL | Rollator

- Steel construction
- Handle height 79 – 94 cm
- Seat area 49 x 26 cm (effective seat width 55 cm)
- Seat height 63 cm
- Front wheels 200 x 50 mm PU (solid rubber)
- Rear wheels 200 x 50 mm PU (solid rubber)
- Shopping basket removeable
- Tray & stick holder
- Frame colour: Silver metallic



12,1 kg 70,5 cm 64 cm 79 – 94 cm 200 kg 121,6 cm

F3 F4



COMMODE WHEELCHAIR XXL | Special design

- Seat width 55 | 60 | 65 | 70 cm
- Armrests swiveling
- Footboard adjustable in height
- Rear swivel-brake wheels, 200 x 50 cm
- Including commode bucket and upholstered seat plate
- Hygiene opening 28 x 25 cm oval
- Seat height 51 cm
- Colour: Grey



46,1 kg 71 – 86 cm 102,5 cm 102,5 cm 250 kg

F3 F4

RL-120 SL | Lightweight rollator

- Aluminium construction
- Handle height 87,5 – 107,5 cm
- Seat area 35,5 x 35 cm
- Seat height 59 – 64 cm (3-fold adjustable)
- Front wheels 200 x 36 mm PU (solid rubber)
- Rear wheels 200 x 36 mm PU (solid rubber)
- Shopping basket removeable
- Tray
- Frame colour: Silver metallic



8 kg 62 cm 71 cm 87,5 – 107,5 cm 120 kg 147 cm

B1 F1 M1 M2 M3



B1 F1 M1 M2 M3

TOBAGO SL | Shower stool

- Seat height 52 – 60 cm
- Seat width 40 cm
- Seat depth 40 cm
- Colour: White



4,7 kg 64 cm 52 cm 94,5 – 102,5 cm 150 kg

TS-1 SL | Commode wheelchair

- Padded seat
- Backrest removable
- Incl. commode bucket
- Seat Width 42 cm
- Seat Depth 45 cm
- Backrest height 46 cm
- hygiene opening 26 x 22,5 cm oval
- Seat height 52 – 60 cm
- Powder coated frame
- Colour: Grey



16 kg 60 cm 95 cm 101 – 109 cm 150 kg

B1 F1 M1 M2 M3



B1

F1

M1

M2

M3



The lightweight

The Pyro Start Plus SL is the B+B lightweight wheelchair for tall people. Its dimensions match the Pyro Start Plus seamlessly, so that coverage is ensured up to a height of 2.10 m. The seat height (52.5 - 60 cm), seat depth (46 - 52 cm) and backrest height (46 - 50 cm) can all be adjusted, meaning

the Pyro Start Plus SL provides maximum flexibility. All the usual Pyro Start Plus features can also be found here. For the comfort of the accompanying person, this lightweight wheelchair can also be equipped with an optional depth-adjustable push handle.

Standard equipment



backrest unit with strap system
Adjustable



Backrest height
Adjustable



Seat height
Adjustable



Seat Depth
Adjustable

Optional



Push handles
adjustable in height



Brake lever extension



Seat cushion



Anti tippers

Technical Data

Seating unit:		
Seat width 43 46 49 52 cm		●
Seat height front 52,5 - 60 cm adjustable		○
Seat height rear 48,5 - 57,5 cm adjustable		●
Seat depth 46 - 52 cm adjustable		●
Seat cushion (seat widths 43 - 52 cm)		○
Backrest height 46 - 50 cm adjustable		●
Backrest with lumbar curve		●
Backrest upholstery Nylon		●
Adjustable backrest unit with strap system		●
Headrest adjustable incl. fixation (possible for seat widths until 56)		○
Leg rests & Side parts:		
Footplates with heel strap		●
Legrest swivelling in and outwards		●
Legrest elevating horizontally adjustable		○
Amputee support right left		○
Duo side parts (desk long position adjustable) swing away		●
Side parts adjustable in height		○
Tyres:		
Rear wheel 24" x 13/8", incl. half-shaft		●
Rear wheel 12,5" PU, (transit version)		○
Front wheel 8" x 11/4"		●
Front wheel 200 x 50 mm		○
PU-tires (solid rubber)		●
Pneumatic tires		○
Wheelbase extension		●
Adapter block		●
One hand drive		○
Spoke protection, transparent		○
Hand rim cover		○

● Basic equipment without extra charge ○ selectable, without extra charge ○ extra charge

Brakes:	
Parking brake (user operation)	●
Drum brake (attendant operation)	○
Single-hand brake (mechanical)	○
Brake lever extension	○
Equipment:	
Togo (power pushing aid)	○
Push handles adjustable in height	○
Adaption for mounting the wheelchair	○
Mounting aid for adaption	○
Anti tippers	○
Tilting aid	●
Safety belt	○
Stick holder	○
Therapy tray	○
Fixation for infusion bottles oxygen bottles	○
Apino City Bag	○
Apino Backpack	○
Passive lighting	●
Frame colour: Anthrac ite	○

15,8 kg	sw + 20 cm	110 cm	106 - 110 cm	150 kg

- B1
- F1
- M1
- M2
- M3



The functional

The Protego SL is the multifunctional wheelchair, adapted to the needs of tall people. With a seat depth that can be adjusted from 48 to 52 cm, a seat height that can be adjusted from 52 to 60 cm and a back height that is adjustable from 54 to 65 cm, it can be adapted individually to people with a height of up to 2.10 m. The usual Protego equipment fea-

tures such as the 3-way adjustable headrest, the height-adjustable side elements and the horizontally adjustable leg rests have been adopted. In addition to this, the Protego SL series is equipped with depth-adjustable push handles as standard.

Standard equipment



Backrest height
adjustable



Push handles
adjustable



Seat Depth
adjustable



Seat height
adjustable

Optional



Trunk support



Hemiplegic armrest
armrest for a paretic arm



Therapy tray



Fixation for infusion bottles |
oxygen bottles

Technical Data

Seating unit:		
Seat width 44 – 46,5 49 – 51,5 cm		○
Seat height 52 – 60 cm einstellbar (with cushion)		●
Seat depth 48 – 52 cm		●
Seat angle adjustable from 0° to 15°		●
Abduction pad		○
Seat cushion		●
Seat cushion C-Comb		○
Seat upholstery from Dartex, night grey		●
Backrest ergonomic shape with lateral support		●
Backrest height 54 – 65 cm		●
Backrest reclining from 0° to +44°		●
Backrest upholstery Dartex, night grey		●
Trunk support, swing away		○
Headrest adjustable in 3 directions		●
Leg rests & Side parts:		
Footplates adjustable in angle		●
Legrest elevating and angle adjustable with length adjustment		●
Knee pads		●
Calf pads		●
Side parts adjustable in height and depth, removable with armrest upholsteries (dartex upholstery)		●
Tyres:		
Rear wheel 24" x 13/8" PU (solid rubber) incl. half shaft		●
Rear wheel 12,5" PU (transit version)		○
Front wheel 7" x 45 mm PU (solid rubber)		●
Spoke protection, transparent		○

● Basic equipment without extra charge ○ selectable, without extra charge ○ extra charge

Brakes:	
Parking brake (user operation)	●
Drum brake (attendant operation)	○
Brake lever extension	○
Equipment:	
Togo (Power Pushing Aid)	○
Push handles adjustable	●
Adaption for mounting the wheelchair	○
Mounting aid for adaption	○
Anti tippers	●
Safety belt	○
Therapy tray	○
Hemiplegic armrest	○
Fixation for infusion bottles oxygen bottles	○
Passive lighting	●
Frame colour: Anthracite	●

36 kg	sw + 19 cm	120 cm	103,5 – 111,5 cm	150 kg

www.bischoff-bischoff.com

Bischoff & Bischoff GmbH

Becker-Göring-Straße 13
D-76307 Karlsbad
www.bischoff-bischoff.com

B+B France S.A.R.L.

Centre d'affaires Parc Lumière
46 avenue des Frères Lumière
F-78190 Trappes
www.b-bfrance.fr

Movilidad B&B Iberia S.L.

P.I. Can Mascaró
C/Ponent, Nave 1-A
E-08756 La Palma de Cervelló
www.bbiberia.es

Bischoff & Bischoff CZ s.r.o.

Na Pruhone 3412
CZ-27601 Melník

Retailer: